

Our
Children's Centers
 offer a variety of
 programs. Please visit
 or call for our monthly
 schedule of events.



Zack©



Browse the
Citizens Bookstore
 on the lower level of
 the La Plata Branch.
 Open Saturdays
 9:00 a.m. to 4:30 p.m.



**LA PLATA BRANCH/
 OUTREACH SERVICES**
 2 GARRETT AVENUE
 LA PLATA, MD 20646-5959
 301-934-9001, 301-870-3520

Located on the corner of Charles
 Street (Rt. 6) and Garrett Avenue,
 near the hospital.
 Outreach Services available for
 homebound and daycare.



POTOMAC BRANCH
 3225 RUTH B. SWANN DRIVE
 INDIAN HEAD, MD 20640-3038
 301-375-7375

Located off Indian Head Hwy.
 (Rt. 210) about 1/2 mile south of
 the intersection of Marshall Hall Rd.
 (Rt 227) and Indian Head Hwy.



P. D. BROWN MEMORIAL BRANCH
 50 VILLAGE STREET
 WALDORF, MD 20602-1837
 301-645-2864, 301-843-7688

Located behind Smallwood Village
 Shopping Center (off St. Charles Pkwy)
 on Village Street between St. Thomas
 Drive and St. Ignatius Drive.

CONVENIENT WEBSITE
www.ccplonline.org

LIBRARY HOURS OF OPERATION:
 Mon. - Thurs. 9:00 a.m. to 8:00 p.m.
 Friday 1:00 p.m. to 5:00 p.m.
 Saturday 9:00 a.m. to 5:00 p.m.
 Sunday 1:00 p.m. to 5:00 p.m.
 (Sept-May) at P.D. Brown only.

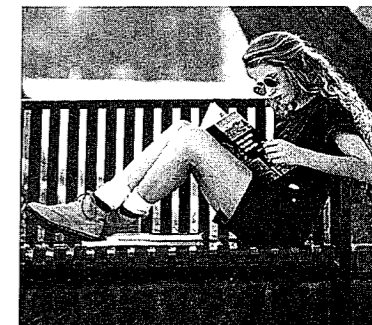
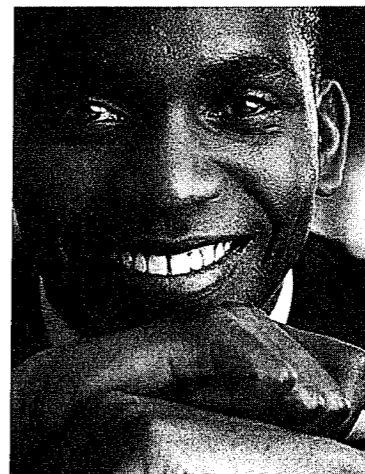
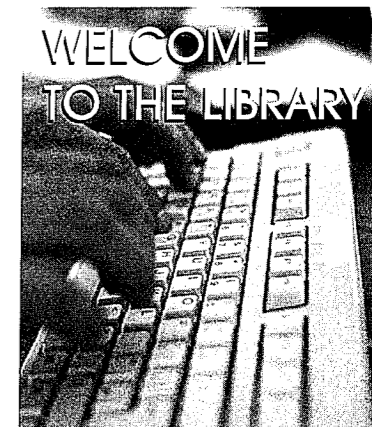
Updated: January 2009

*Great things
 are happening
 at your
 Public Library...*

*Come, check
 us out!*



Charles County Public
LIBRARY



LA PLATA BRANCH/OUTREACH SERVICES
 2 GARRETT AVENUE, LA PLATA, MD 301-934-9001

POTOMAC BRANCH
 3225 RUTH B. SWANN DRIVE, INDIAN HEAD 301-375-7375

P. D. BROWN MEMORIAL BRANCH
 50 VILLAGE STREET, WALDORF, MD 301-645-2864

www.ccplonline.org

Information for Life